

METRIC
 DISTANCES SHOWN ON THIS PLAN ARE
 IN METRES AND CAN BE CONVERTED
 TO FEET BY DIVIDING BY 0.3048

SCHEDULE		
PART	DESCRIPTION	PIN
1	PART OF LOT 7 CONCESSION 9	ALL OF
2	PART OF LOT 7 CONCESSION 9	04535-0062

PLAN 4R- 15451

RECEIVED AND DEPOSITED

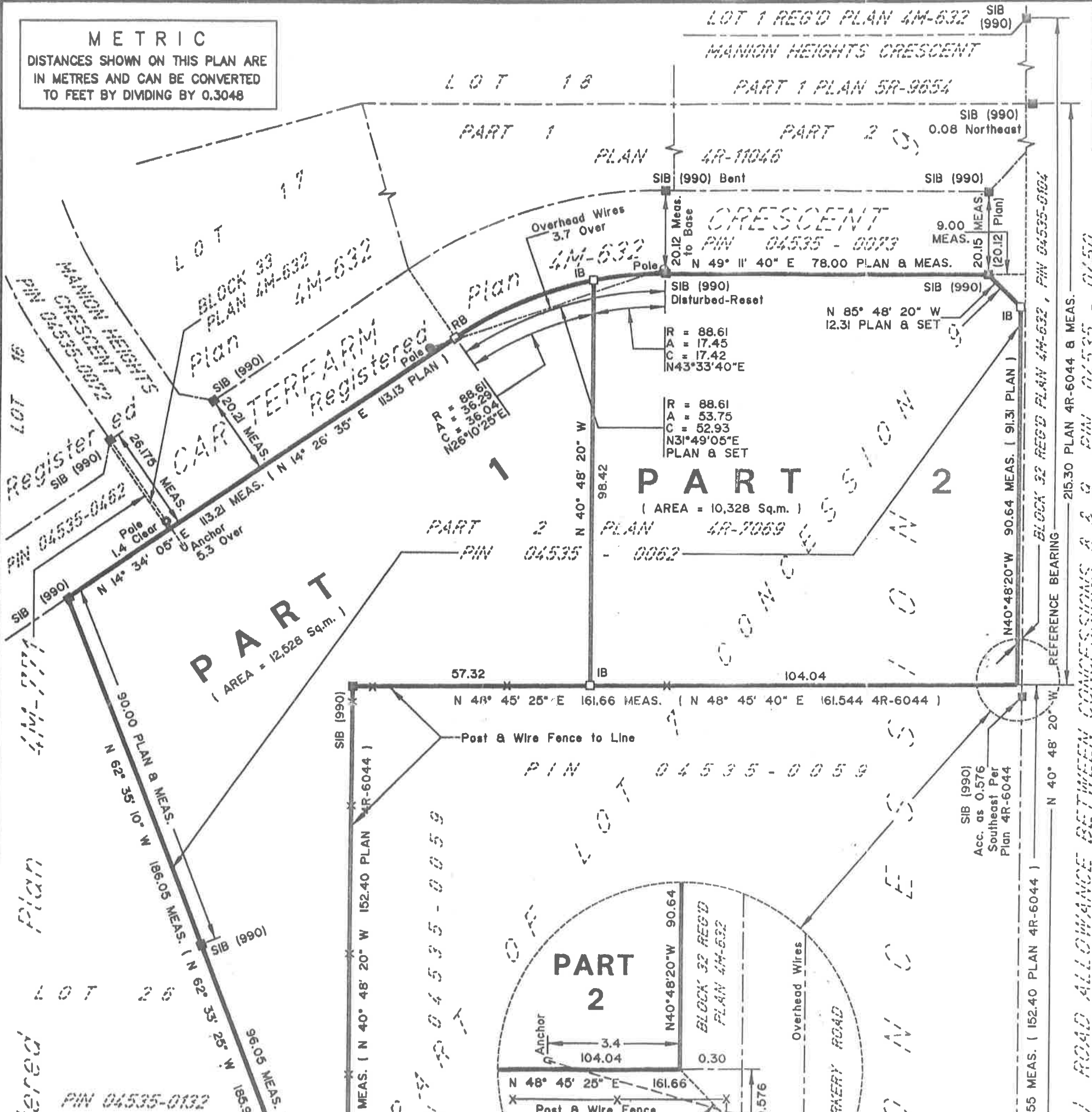
DATE FEB. 15, 2000

LAND REGISTRAR
 FOR THE LAND TITLES DIVISION
 OF OTTAWA-CARLETON No 4.

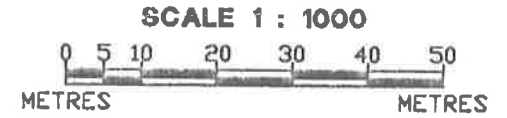
I REQUIRE THIS PLAN TO BE
 DEPOSITED UNDER THE
 LAND TITLES ACT.

DATE FEBRUARY 4, 2000

M. E. Renaud
 M. E. RENAUD
 ONTARIO LAND SURVEYOR



PLAN OF SURVEY
 OF
PART OF LOT 7 CONCESSION 9
GEOGRAPHIC TOWNSHIP OF HUNTLEY NOW IN THE
TOWNSHIP OF WEST CARLETON
REGIONAL MUNICIPALITY OF OTTAWA-CARLETON
 M. E. RENAUD ONTARIO LAND SURVEYOR 2000



SURVEYOR'S CERTIFICATE

I HEREBY CERTIFY THAT

1. THIS SURVEY AND PLAN ARE CORRECT AND IN ACCORDANCE WITH THE SURVEYS ACT, THE SURVEYORS ACT, THE LAND TITLES ACT AND THE REGULATIONS MADE UNDER THEM.
2. THE SURVEY WAS COMPLETED ON THE 1st DAY OF FEBRUARY, 2000.

FEBRUARY 4, 2000

M. E. Renaud
 M. E. RENAUD
 ONTARIO LAND SURVEYOR

NOTES & LEGEND

BEARINGS ARE ASTRONOMIC AND ARE DERIVED FROM THE SOUTHWESTERLY LIMIT OF CORKERY ROAD SHOWN AS N 40° 48' 20" W ON PLAN 4M-632.

■ DENOTES SURVEY MONUMENT FOUND